

Human Siglec-3/CD33 Protein

Cat. No. CD3-HM433

Description

Source	Recombinant Human Siglec-3/CD33 Protein is expressed from HEK293 with His tag and Avi tag at the C-Terminus. It contains Asp18-His259.
Accession	P20138-1
Molecular Weight	The protein has a predicted MW of 29.6 kDa. Due to glycosylation, the protein migrates to 52-60 kDa based on Bis-Tris PAGE result.
Endotoxin	Less than 1 EU per μg by the LAL method.
Purity	>95% as determined by Tris-Bis PAGE >95% as determined by HPLC

Formulation and Storage

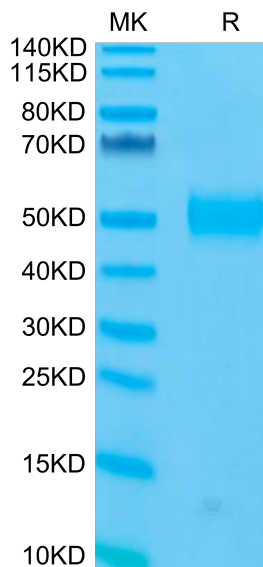
Formulation	Lyophilized from 0.22 μm filtered solution in 20 mM MES, 500 mM NaCl, 200 mM L-Arginine (pH 5.0). Normally 8% mannitol is added as protectant before lyophilization.
Reconstitution	Centrifuge the tube before opening. Reconstituting to a concentration more than 100 $\mu\text{g}/\text{ml}$ is recommended. Dissolve the lyophilized protein in distilled water.
Storage	-20 to -80°C for 12 months as supplied from date of receipt. -80°C for 3 months after reconstitution. Recommend to aliquot the protein into smaller quantities for optimal storage. Please minimize freeze-thaw cycles.

Background

Sialic-acid-binding immunoglobulin-like lectin (Siglec) that plays a role in mediating cell-cell interactions and in maintaining immune cells in a resting state. They are sialoadhesin/CD169/Siglec-1, CD22/Siglec-2, CD33/Siglec-3, Myelin-Associated Glycoprotein (MAG/Siglec-4a) and Siglecs 5 to 11. To date, no Siglec has been shown to recognized any cell surface ligand other than sialic acids, suggesting that interactions with glycans containing this carbohydrate are important in mediating the biological functions of Siglecs.

Assay Data

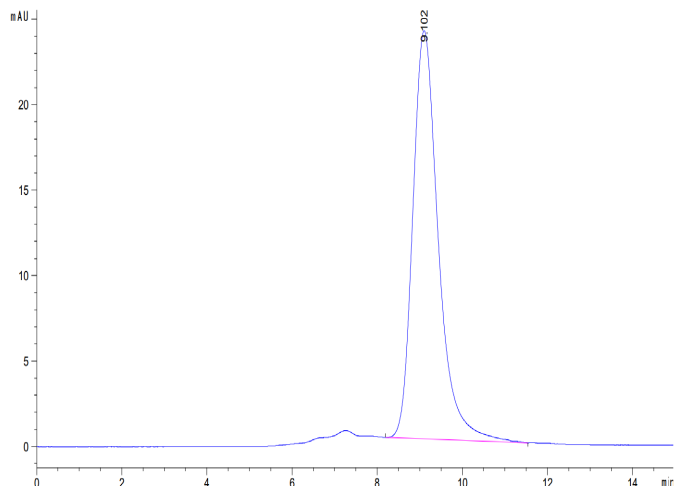
Bis-Tris PAGE



Human Siglec-3 on Bis-Tris PAGE under reduced condition. The purity is greater than 95%.

SEC-HPLC

Assay Data

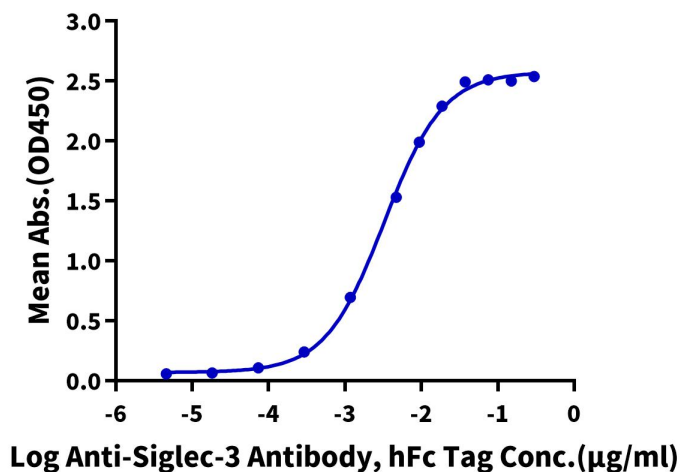


The purity of Human Siglec-3 is greater than 95% as determined by SEC-HPLC.

ELISA Data

Human Siglec-3, His Tag ELISA

0.1µg Human Siglec-3, His Tag Per Well



Immobilized Human Siglec-3, His Tag at 1 µg/ml (100 µl/Well) on the plate. Dose response curve for Anti-Siglec-3 Antibody, hFc Tag with the EC50 of 3.4 ng/ml determined by ELISA.